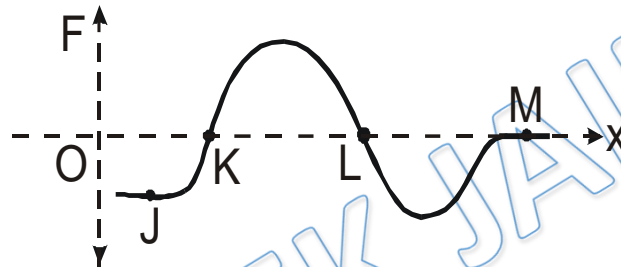


Video Solution on Website:- <https://physicsaholics.com/home/courseDetails/75>

Video Solution on YouTube:- <https://youtu.be/AoTxhCp1uY0>

Written Solution on Website:- <https://physicsaholics.com/note/notesDetails/77>

- Q 1. A particle moving along x-axis is being acted upon by one dimensional conservative force  $F$ . In the  $F$ - $x$  curve shown, four points J, K, L, M are marked on the curve. Column II gives different type of equilibrium for the particle at different positions. Column I gives certain positions on the force position graphs. Match the positions in Column-I with the corresponding nature of equilibrium at these posit



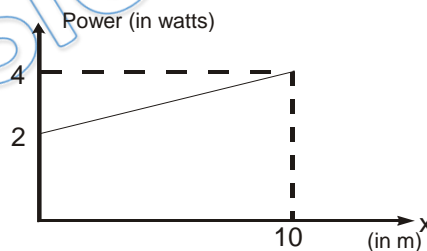
Column I

- (A) Point J is position of  
 (B) Point K is position of  
 (C) Point L is position of  
 (D) Point M is position of

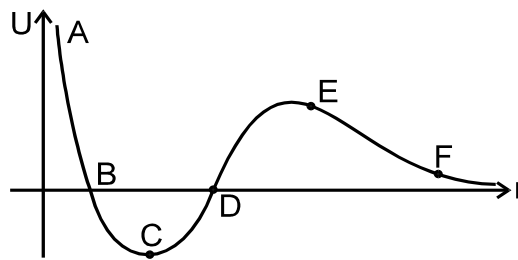
Column II

- (p) Neutral equilibrium  
 (q) Unstable equilibrium  
 (r) Stable equilibrium  
 (s) No equilibrium

- Q 2. A particle A of mass  $10/7$  kg is moving in the positive direction of  $x$ . Its initial position is  $x = 0$  & initial velocity is  $1$  m/s. The velocity at  $x = 10$  is: (use the graph given)



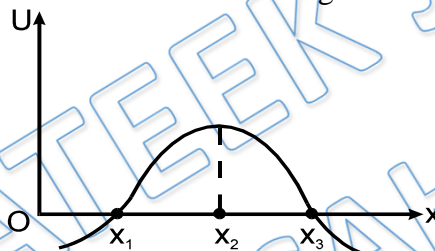
- (a)  $4$  m/s  
 (b)  $2$  m/s  
 (c)  $3\sqrt{2}$  m/s  
 (d)  $100/3$  m/s
- Q 3. The given plot shows the variation of  $U$ , the potential energy of interaction between two particles with the distance separating them,  $r$ . Then which of the following statements are correct.:



- (a) B and D are equilibrium points  
 (b) C is a point of stable equilibrium  
 (c) The force of interaction between the two particles is attractive between points C and D and repulsive between points D and E on the curve.  
 (d) The force of interaction between the particles is repulsive between points E and F on the curve.

- Q 4. An engine exerts a force  $\vec{F} = (20\hat{i} - 3\hat{j} + 5\hat{k})\text{N}$  and moves with velocity  $\vec{v} = (6\hat{i} + 20\hat{j} - 3\hat{k})\text{ m/s}$ . The power of the engine (in watt) is:  
 (a) 45 (b) 75 (c) 20 (d) 10

- Q 5. In the figure shown the potential energy U of a particle is plotted against its position 'x' from origin. Then which of the following statement is correct. A particle at:



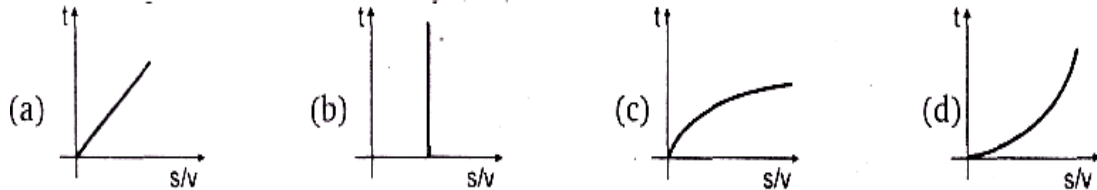
- (a)  $x_1$  is in stable equilibrium (b)  $x_2$  is in stable equilibrium  
 (c)  $x_3$  is in stable equilibrium (d) none of these
- Q 6. Power supplied to a particle of mass 2 kg varies with time as  $P = 3t^2 / 2$  watt. Here t is in second, velocity of particle at  $t = 0$  is  $v = 0$ . The velocity of particle at time  $t = 2\text{s}$  will be  
 (a) 1 m/s (b) 4 m/s (c) 2 m/s (d)  $2\sqrt{2}$  m/s
- Q 7. A force F acting on a body depends on its displacement S as  $F \propto S^{-1/3}$ . The power delivered by F will depend on displacement as  
 (a)  $S^{2/3}$  (b)  $S^{-5/3}$  (c)  $S^{1/2}$  (d)  $S^0$
- Q 8. A body is moved along a straight line by a machine delivering constant power. The distance moved by the body in time t is proportional to  
 (a)  $t^{1/2}$  (b)  $t^{3/4}$  (c)  $t^{3/2}$  (d)  $t^2$
- Q 9. A constant power P is applied to a particle of mass m. The distance travelled by the particle when its velocity increases from  $v_1$  to  $v_2$  is (neglect friction)  
 (a)  $3p / m (v_2^2 - v_1^2)$  (b)  $m / 3p (v_2 - v_1)$



(c)  $m/3p (v_2^3 - v_1^3)$       (d)  $m/3p (v_2^2 - v_1^2)$

- Q 10. A block of mass  $m$  is pulled by a constant power  $P$  placed on a rough horizontal plane. The friction coefficient between the block and the surface is  $\mu$ . Maximum velocity of the block will be  
(a)  $\mu p/mg$       (b)  $\mu mg/p$       (c)  $\mu mgp$       (d)  $p/\mu mg$

- Q 11. A body is moved from rest along a straight line by a machine delivering constant power. The ratio of displacement and velocity ( $s/v$ ) varies with time  $t$  as:



- Q 12. A particle moves in a straight line with constant acceleration under a constant force  $F$ . Select & correct alternatives).

- (a) power developed by this force varies linearly with time.  
(b) power developed by this force varies parabolically with time.  
(c) power developed by this force varies linearly with displacement.  
(d) power developed by this force varies parabolically with displacement.

- Q 13. In projectile motion power of the gravitational force

- (a) is constant throughout  
(b) is negative for first half, zero at topmost point and positive for rest half  
(c) varies linearly with time  
(d) is positive for complete path

- Q 14. A pump motor is used to deliver water at a certain rate from a given pipe. To obtain  $n$  times water from the same pipe in the same time

- (a) force exerted by the motor should be increased  $n^2$  times  
(b) force exerted by the motor should be increased  $n$  times  
(c) power of the motor must be increased  $n^3$  times  
(d) power of the motor must be increased  $n^2$  times

## Answer Key

Q.1 (A) s (B) q (C) r (D) p	Q.2 a	Q.3 b, d	Q.4 b	Q.5 d
Q.6 c	Q.7 d	Q.8 c	Q.9 c	Q.10 d
Q.11 a	Q.12 a, d	Q.13 b, c	Q.14 a, c	


PLUS **ICONIC\*\***

- ✓ India's Best Educators
- ✓ Interactive Live Classes
- ✓ Structured Courses & PDFs
- ✓ Live Tests & Quizzes
- ✗ Personal Coach
- ✗ Study Planner

24 months	₹2,333/mo	>
No cost EMI	₹56,000	
18 months	₹2,625/mo	>
No cost EMI	₹47,250	
12 months	₹3,208/mo	>
No cost EMI	₹38,500	
6 months	₹4,667/mo	>
No cost EMI	₹28,000	

To be paid as a one-time payment

[View all plans](#)

 Add a referral code APPLY

# PHYSICSLIVE


PLUS **ICONIC\*\***

- ✓ India's Best Educators
- ✓ Interactive Live Classes
- ✓ Structured Courses & PDFs
- ✓ Live Tests & Quizzes
- ✗ Personal Coach
- ✗ Study Planner

24 months	₹2,100/mo	>
No cost EMI	+10% OFF ₹50,400	
18 months	₹2,363/mo	>
No cost EMI	+10% OFF ₹42,525	
12 months	₹2,888/mo	>
No cost EMI	+10% OFF ₹34,650	
6 months	₹4,200/mo	>
No cost EMI	+10% OFF ₹25,200	

To be paid as a one-time payment

[View all plans](#)

 Awesome! **PHYSICSLIVE** code applied ✗

Use code **PHYSICSLIVE** to get 10% OFF on Unacademy PLUS.

# Written Solution

**DPP-4 WEP: Equilibrium, Power**

**By Physicsaholics Team**

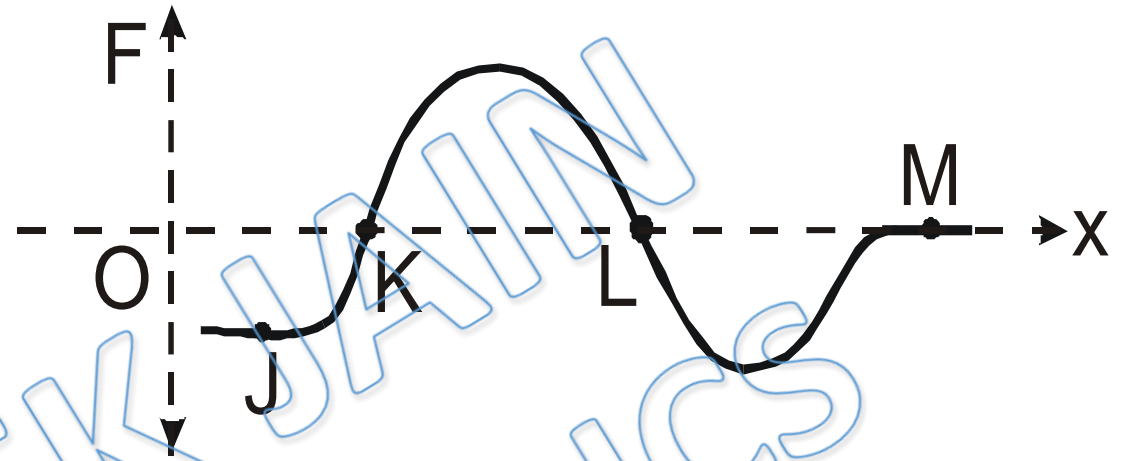
**JEE Main & Advanced, NSEP, INPhO, IPhO  
Physics DPP**

**DPP-4 WEP: Equilibrium, Power  
By Physicsaholics Team**

Solution: 1

At J ,  $F \neq 0$

$\Rightarrow$  J is not equilibrium.



At K ,  $F = 0$

just before K ,  $F = -ve \Rightarrow F$  is away from K

just after K ,  $F = +ve \Rightarrow$  , , ,

$\Rightarrow$  K is unstable equilibrium.

At  $L$ ,  $F = 0$

just before  $L$ ,  $F = +ve \Rightarrow F$  is towards  $L$

„ after  $L$ ,  $F = -ve \Rightarrow$  „ „ „ „

$\Rightarrow L$  is stable equilibrium.

At  $M$ ,  $F = 0$

just before  $M$ ,  $F = 0$

„ after  $M$ ,  $F = 0$

$\Rightarrow M$  is neutral equilibrium.

Ans. (A)s (C)r (D)p

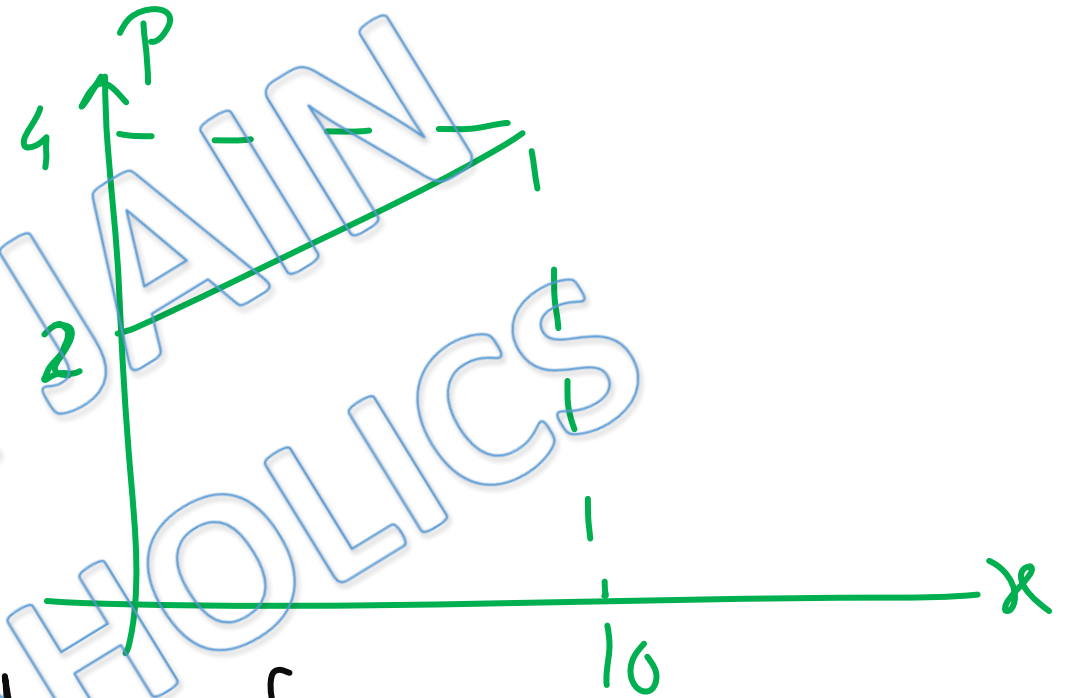


Solution:2

$$m = 10/7 \text{ Kg}$$

$$\text{at } x=0, u = 1 \text{ m/sec.}$$

$$\text{at } x=10, v = ?$$



Area under Curve

$$= \int P dx = \int F v dx = \int m a v dx = \int m \frac{v dv}{dx} v dx$$

$$= m \int_u^v v^2 dv = \frac{m (v^3 - u^3)}{3}$$

$$\Rightarrow \text{Area} = \frac{10}{7 \times 3} (v^3 - 1) = \frac{1}{2} \times 10 (4 + 2)$$

$$\frac{10}{7 \times 3} (v^3 - 1) = 10 \times 3$$

$$\Rightarrow v^3 = 64$$

$$\Rightarrow v = 4 \text{ m/Sec}$$

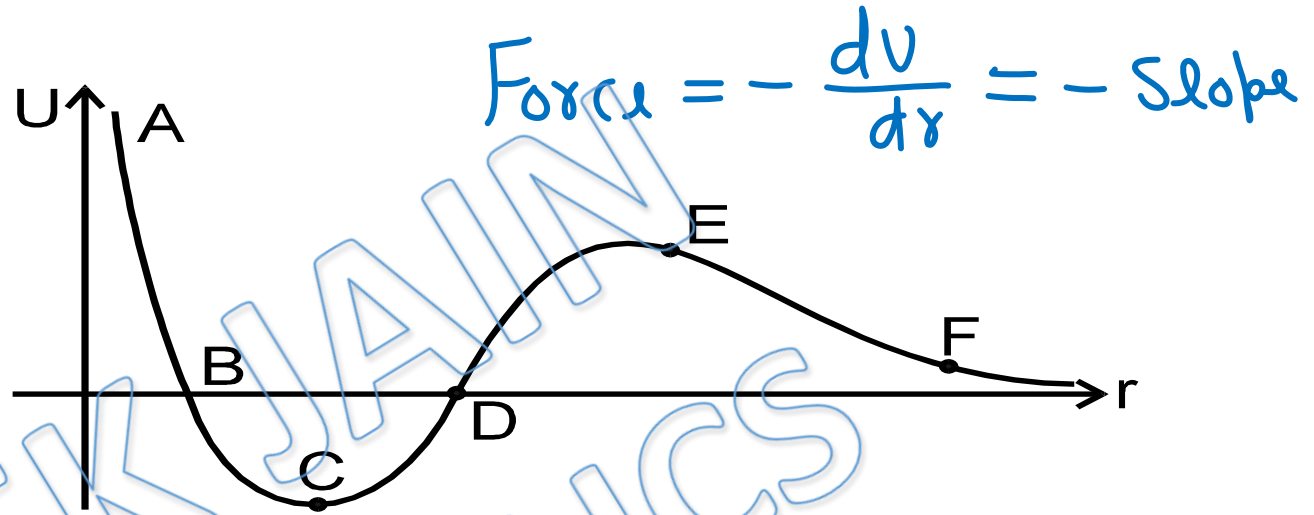
PRATEEK JAIN  
PHYSICSAHOLICS

Ans(a)

Solution:3

In  $U-x$  graph  
At Equilibrium position

Slope = 0



Only C & E are equilibrium.

In  $U-x$  graph, minima is stable equilibrium and maxima is unstable equilibrium.

$\Rightarrow$  C is stable and E is unstable equilibrium.

from C to E, Slope = +ve  $\Rightarrow F = -ve \Rightarrow$  attraction.

from E to F, Slope = -ve  $\Rightarrow F = +ve \Rightarrow$  repulsive

Ans (b,d)

Solution:4

$$\vec{F} = 20\hat{i} - 3\hat{j} + 5\hat{k}$$

$$\vec{V} = 6\hat{i} + 20\hat{j} + 3\hat{k}$$

$$\begin{aligned} P &= \vec{F} \cdot \vec{V} = 120 - 60 + 15 \\ &= 75 \text{ Watt} \end{aligned}$$

Ans.b

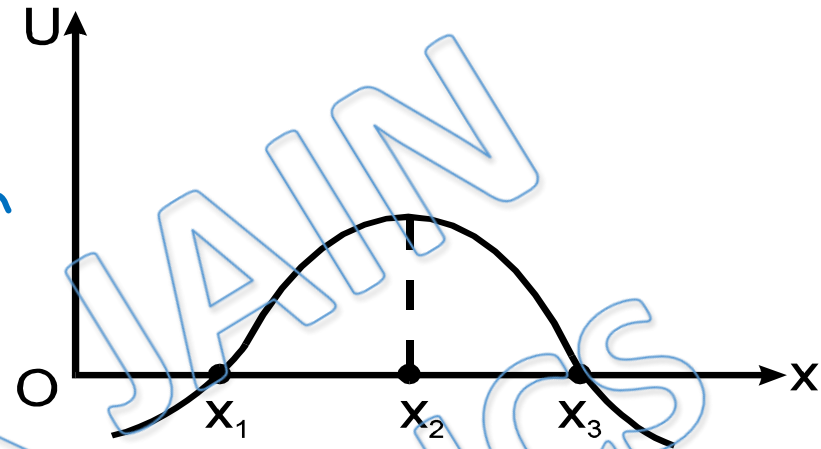
Solution:5

At equilibrium in  $U-x$  graph

$$\frac{dU}{dx} = 0 \Rightarrow \text{Slope} = 0$$

$\Rightarrow$  only  $x_2$  is equilibrium.

Since  $x_2$  is maxima it is unstable equilibrium.



Ans (d)

Solution:6

$$P = \frac{3t^2}{2} \quad \& \quad \text{at } t=0, v=0 \quad \& \quad m=2 \text{ Kg}$$

$$W = \int P dt = \int_0^2 \frac{3t^2}{2} dt = \left[ \frac{t^3}{2} \right]_0^2 = 4 \text{ J}$$

Using work-energy theorem

$$W = \Delta K$$

$$\Rightarrow 4 = \frac{1}{2} \times 2 v^2 - 0$$

$$\Rightarrow v = 2 \text{ m/Sec}$$

Ans(c)

Solution:7

$$F \propto r^{-1/3}$$

$$\Rightarrow a \propto r^{-1/3}$$

$$\Rightarrow \int v dv \propto \int r^{-1/3} dr$$

$$\Rightarrow v^2 \propto r^{2/3}$$

$$\Rightarrow KE \propto r^{2/3}$$

$$\Rightarrow P = \frac{d}{dt}(KE) \propto r^{2/3-1} \frac{dr}{dt} \propto v r^{-1/3} \propto r^{1/3} r^{-1/3}$$

$$\Rightarrow P \propto r^0$$

Ans(d)

Solution:8

$$P = \text{Constant}$$

$$\Rightarrow W = P t$$

$$\Rightarrow \frac{1}{2} m v^2 = P t$$

$$\Rightarrow v \propto t^{1/2}$$

$$\Rightarrow \int ds \propto \int t^{1/2} dt$$

$$\Rightarrow s \propto t^{3/2}$$

Ans(c)



Solution:9

$$P = \text{Constant}$$

$$\Rightarrow P = FV = mav$$

$$\Rightarrow P = m v \frac{dx}{dt}$$

$$\Rightarrow \int_0^x dx = \frac{m}{P} \int_{v_1}^{v_2} v^2 dv$$

$$\Rightarrow x = \frac{m}{3P} (v_2^3 - v_1^3)$$

Ans(c)

Solution:10

$$\text{At } v = v_{\max}, \quad \frac{dv}{dt} = 0$$

by work-Energy theorem  $\rightarrow$

$$W_{\text{all}} = K - K_i = \frac{1}{2}mv^2 - K_i$$

$$\Rightarrow P_{\text{all}} = \frac{1}{2}m \times 2v \frac{dv}{dt} = 0$$

$$\Rightarrow P_{\text{all}} = 0$$

$$\Rightarrow P - \mu mg v = 0$$

$$\Rightarrow v = \frac{P}{\mu mg}$$

Ans(d)

Solution:11

$$P = \text{Constant}$$

$$\Rightarrow P = m a v$$

$$\Rightarrow \frac{P}{m} = v^2 \frac{dv}{dx}$$

$$\Rightarrow \int \frac{P dx}{m} = \int v dv$$

$$\Rightarrow \frac{Px}{m} = \frac{v^2}{2} \quad \text{--- (1)}$$

$$v = \sqrt{\frac{2Px}{m}}$$

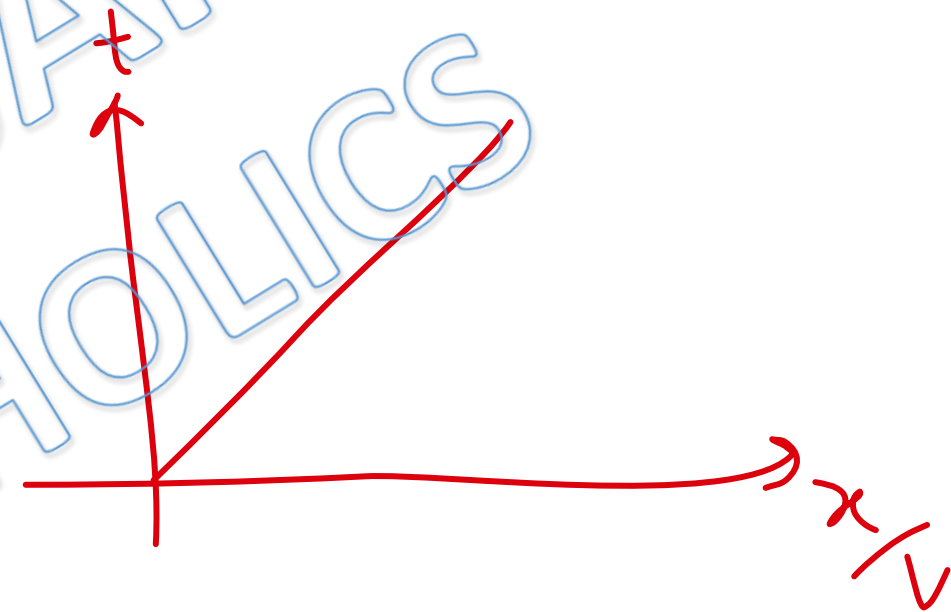
$$\int \frac{dx}{\sqrt{x}} = \sqrt{\frac{2P}{m}} \int dt$$

$$\Rightarrow 2x^{1/2} = \sqrt{\frac{2P}{m}} t$$

$$\Rightarrow x = \frac{2P}{4m} t^2$$

$$\Rightarrow v = \frac{P}{m} t$$

$$\Rightarrow \frac{x}{v} = \frac{1}{2} t$$



Ans (a)

Solution:12

$$F = \text{Constant}$$

$$\Rightarrow a = \text{Constant}$$

$$\Rightarrow v \propto t$$

$$\Rightarrow P = Fv \propto t \Rightarrow P-t \text{ graph is straight line.}$$

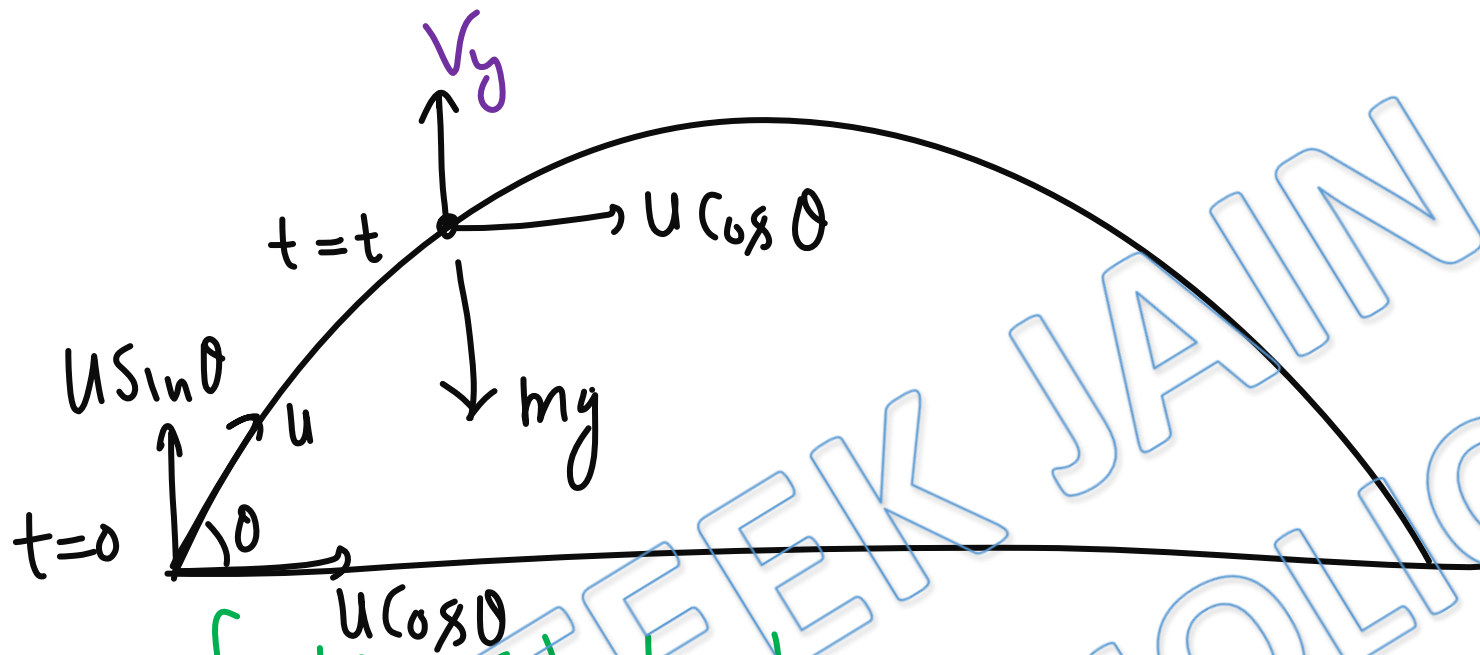
$$v \propto t \Rightarrow \frac{dx}{dt} \propto t \Rightarrow dx \propto t dt$$

$$\Rightarrow x \propto t^2 \Rightarrow t \propto \sqrt{x}$$

$$\Rightarrow P \propto t \propto \sqrt{x}$$

$$\Rightarrow P^2 \propto x \rightarrow P-x \text{ graph is parabola. Ans (a, d)}$$

Solution:13



Power of  $mg$  at  $t=t$

$$P = \vec{F} \cdot \vec{V} = -mg v_y = -mg (u \sin \theta - gt)$$

$$\Rightarrow P = -mgu \sin \theta + mg^2 t$$

at topmost point  $v_y = 0 \Rightarrow P = 0$

before topmost point  $mg$  &  $v_y$  are opposite  $\Rightarrow P = -ve$ .

After , , , , , , in same direction  $\Rightarrow P = +ve$ . **Ans (b, c)**

Solution:14

$$P \propto \frac{1}{2} h v^2$$

mass of water delivered per Second  
speed of water

but  $h = \rho A v$

density  
cross sectional Area of pipe.

$$\Rightarrow P \propto v^3$$

Ans.a,c

For Video Solution of this DPP, Click on below link

Video Solution  
on Website:-

<https://physicsaholics.com/home/courseDetails/75>

Video Solution  
on YouTube:-

<https://youtu.be/AoTxhCp1uY0>

Written Solution  
on Website:-

<https://physicsaholics.com/note/notesDetails/77>



 **SUBSCRIBE**



[@Physicsaholics](#)

[@Physicsaholics\\_prateek](#)

[@NEET\\_Physics](#)

[@IITJEE-Physics](#)

[physicsaholics.com](#)

[Unacademy](#)



**CLICK**

Chalo Niklo